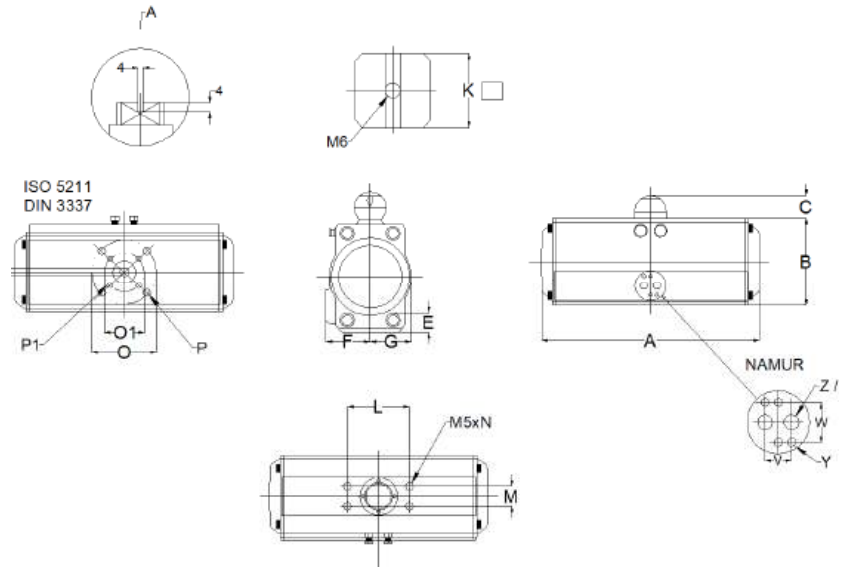


PNEUMATIC ROTARY ACTUATORS - GENERAL DUTY (1 YR WARRANTY)



Key Features and Benefits:

1. Precision Control: Pneumatic rotary actuators offer precise control over angular motion, allowing for accurate positioning and repeatability.
2. High Torque Output: Despite their compact size, these actuators deliver substantial torque, enabling them to handle heavy loads effortlessly.
3. Quick Response Time: With minimal lag between input and output, pneumatic rotary actuators ensure swift and responsive motion, enhancing overall system efficiency.
4. Durability: Built to withstand harsh operating environments, these actuators boast exceptional durability and reliability, minimizing downtime and maintenance costs.
5. Versatility: From valve automation to robotics, pneumatic rotary actuators find applications in a myriad of industries, showcasing their versatility and adaptability.

ITEM NO	PART DESCRIPTION	MATERIAL GRADE	QTY	ITEM NO2	PART DESCRIPTION3	MATERIAL GRADE4	QTY
1	BODY	ALUMINIUM ALLOY	1	17	CAP SCREW	STAINLESS STEEL	1
2	LEFT END CAP	ALUMINIUM ALLOY	1	18	COLOUR CODE	NYLON	2
3	DRIVE SHAFT	ALLOY STEEL	1	19	"O" RING(STOP SCREW)	NBR	2
4	RIGHT END CAP	ALUMINIUM ALLOY	1	20	"O" RING(PISTON)	NBR	2
5	OCTI-CAM	ALLOY STEEL	1	21	"O" RING(PINION BOTTOM)	NBR	1
6	THRUST BEARING(PINION TOP)	POM+PTFE	1	22	"O" RING(PINION TOP)	NBR	1
7	THRUST BEARING	POM+PTFE	1	23	BEARING (PINION TOP)	POM+PTFE	1
8	THRUST WASHER	STAINLESS STEEL	1	24	BEARING (PINION HEAD)	POM+PTFE	2
9	PISTON	ALUMINIUM ALLOY	2	25	BEARING (PINION BOTTOM)	POM+PTFE	1
10	CAP SCREW	STAINLESS STEEL	8	26	WEAR BAND	NYLON	2
11	STOP TOP SCREW	STAINLESS STEEL	2	27	SPRING SEAT	NYLON	24
12	NUT (STOP SCREW)	STAINLESS STEEL	2	28	SPRING	HIGH-CARBON STEEL	12
13	WASHER (STOP SCREW)	STAINLESS STEEL	2	29	STRAINING BEAM	COPPER PIPE	12
14	SPRING CLIP	SPRING STEEL	1	30	PLUG	NBR	2
15	POSITION INDICATOR	NYLON	1	31	"O" RING(END CAP)	NBR	2
16	INDICATOR THRUST BEARING	STAINLESS STEEL	1				

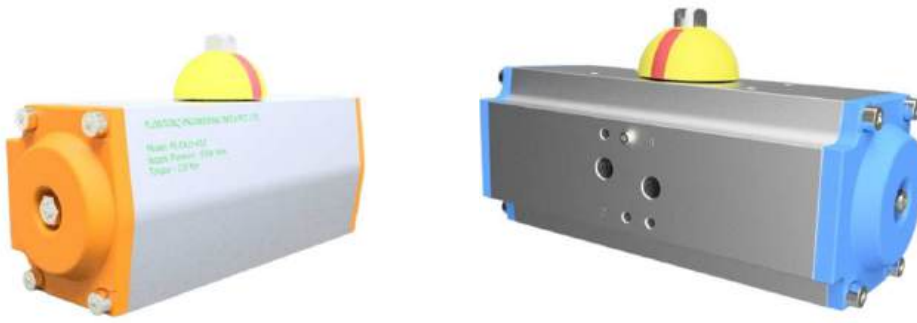
DIMENSIONAL DETAILS

MODEL	FEPT0 52	FEPT0 63	FEPT0 75	FEPT0 83	FEPT0 92	FEPT1 05	FEPT1 25	FEPT1 40	FEPT1 60	FEPT1 90	FEPT2 10	FEPT2 40	FEPT2 70	FEPT3 00	FEPT3 50	FEPT4 00
ISO FLANGE	F03/F 05	F05/F 07	F05/F 07	F05/F 07	F07/F 10	F03/F 10	F07/F 10	F10/F 12	F10/F 12	F14	F14	F16	F16	F15	F16/F 25	F16/F 25
A	154	176	188	211	244	277	310	394	458	523	526	602	718	760	920	940
B	73	89	101	110	118	135	157	175	198	232	257	289	326	350	410	466
C	25	25	25	25	25	25	39	39	39	39	39	30	30	30	30	30
E	13	17	17	20	20	25	27	30	30	38	38	50	50	50	50	50
F	41	47	53	57	60	64	75	75	86	103	113	130	147	174	195	260
G	30	36	43	47	50	58	67	75	86	103	113	130	147	162	190	260
L	80	80	80	80	80	80	80	130	130	130	130	130	130	130	130	130
M	30	30	30	30	30	30	30	30	30	30	30	30	30	30	30	30
N	4- M5x9	4- M5x10	4- M5x11	4- M5x12	4- M5x13	4- M5x14	4- M5x15	4- M5x16	4- M5x17	4- M5x18	4- M5x19	4- M5x20	4- M5x21	4- M5x22	4- M5x23	4- M5x24
O	50	70	70	70	102	102	102	125	125	140	140	165	165	165	254	254
P	4- M5x9	4- M8x12	4- M8x12	4- M8x12	4- M10x15	4- M10x15	4- M10x15	4- M12x18	4- M12x18	4- M16x4	4- M16x4	4- M20x5	4- M20x5	4- M20x5	4- M16x5	4- M20x5
O1	36	50	50	50	70	70	70	102	102						165	165
P1	4- M5x8	4- M6x9	4- M6x9	4- M6x9	4- M8x12	4- M8x12	4- M8x12	4- M8x15	4- M8x15						4- M20x5	4- M20x5
Q	11	14	14	17	17	22	22	27	27	36	36	46	46	46	46	46
V	24	24	24	24	24	24	24	24	24	24	24	24	40	40	40	40
W	36	36	36	36	36	36	36	36	36	36	36	36	45	45	45	45
Y	4- M5x9	4- M5x9	4- M5x9	4- M5x9	4- M5x9	4- M5x9	4- M5x9	4- M5x9	4- M5x9	4- M5x9	4- M5x9	4- M5x9	4- M6x10	4- M6x10	4- M6x10	4- M6x10
Z	G1/4"	G1/4"	G1/4"	G1/4"	G1/4"	G1/4"	G1/4"	G1/4"	G1/4"	G1/4"	G1/4"	G1/4"	G1/4"	G1/2"	G1/2"	G1/2"

TORQUE DETAILS - DOUBLE ACTING

Air Supply Pressure in Bar Vs Torque Output Nm

MODEL	2.0 BAR	2.5 BAR	3.0 BAR	4.0 BAR	4.5 BAR	5.0 BAR	5.5 BAR	6.0 BAR	7.0 BAR	8.0 BAR
FEPT052D	8	10	12	16	18	20	22	24	28	32
FEPT063D	15	18	22	29	33	36	40	44	51	58
FEPT075D	20	25	30	40	45	50	55	60	70	80
FEPT083D	31	39	47	63	70	78	86	94	111	125
FEPT092D	45	56	68	90	102	113	124	135	158	181
FEPT105D	66	83	99	132	149	165	182	198	231	264
FEPT125D	100	125	150	200	226	251	276	301	351	401
FEPT140D	171	214	256	342	385	427	470	513	598	684
FEPT160D	266	332	399	532	598	665	731	798	931	1064
FEPT190D	420	532	638	851	958	1064	1170	1277	1490	1702
FEPT210D	532	665	798	1064	1197	1330	1463	1596	1862	2128
FEPT240D	769	962	1154	1539	1731	1924	2116	2308	2693	3078
FEPT270D	1170	1462	1750	2339	2632	2924	3216	3509	4094	4579
FEPT300D	1526	1908	2289	3052	3434	3815	4197	4578	5341	6104
FEPT350D	2285	2856	3427	4570	5141	5712	6283	6854	7997	9139
FEPT400D	3256	4070	4884	6512	7326	8140	8954	9768	11396	13024



TORQUE DETAILS - SINGLE ACTING

AIR SUPPLY PRESSURE VS TORQUE OUTPUT (Nm)

ACTUATOR MODEL	SPRING QUANTITY	AIR SUPPLY PRESSURE VS TORQUE OUTPUT (Nm)											
		4 BAR		5 BAR		6 BAR		7 BAR		8 BAR		SPRING RETURN TORQUE	
		0°		0°		0°		0°		0°		0°	
		90°		90°		90°		90°		90°		90°	
		START	END	START	END	START	END	START	END	START	END	START	END
FEPT052S	10	7.4	3.6	11.5	6.7	15.5	11.6	19.5	15.6	/	/	12.4	8.5
		1.4	8.2	22.8	15.6	30	22.8	37.3	30.1	44.7	37.4	20.9	13.7
FEPT063S	10	19	11.1	28.8	21.1	39	31.2	49.1	41.2	59.1	51.2	29	21.1
		31	16.6	46.7	32.3	62.4	48	78.1	63.7	93.8	79.3	46	31.6
FEPT075S	10	43.6	21.5	66.2	44.1	88.8	66.7	111.3	89.2	134	11.8	68.7	46.7
		68.9	33.4	102	66.5	135.1	99.6	161.8	123.1	201.2	165.7	98.4	63.3
FEPT083S	10	96	44	146	94	196	144	247	194	297	245	157	105
		170	84	226	169	314	255	427	340	512	426	258	172
FEPT092S	10	253	115	386	248	519	381	652	514	785	647	417	279
		451	233	664	446	877	658	1090	871	1302	1084	618	400
FEPT105S	10	514	304	780	570	1046	836	1312	1102	1578	1368	760	550
		718	431	1103	816	1488	1201	1872	1586	2257	1970	1108	821
FEPT125S	10	1220	767	1805	1352	2390	1937	2974	2521	3560	3107	1572	1119
		1430	695	2355	1693	2956	2221	3719	2984	4482	3747	2122	1460
FEPT140S	10	1963	787	3105	1929	4247	3071	5390	4214	6532	5356	3505	2346
		3012											
FEPT160S	10												
FEPT190S	10												
FEPT210S	10												
FEPT240S	10												
FEPT270S	10												
FEPT300S	10												
FEPT350S	10												
FEPT400S	10												